

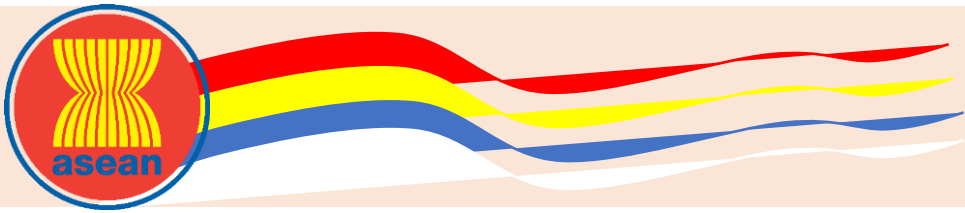
ภาพรวมภัยพิบัติและความเสี่ยงต่อภาวะสาธารณสุขฉุกเฉินของประเทศ
Thailand–Country Profile



Dr. Alisa Yanasan

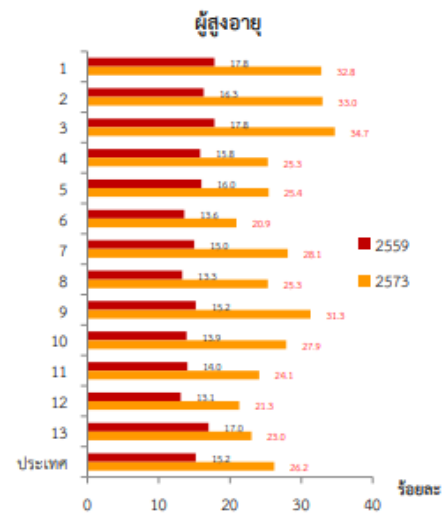
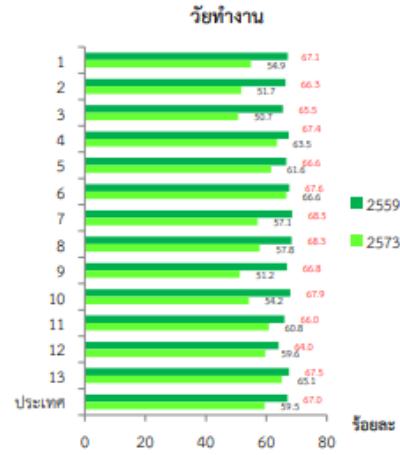
Ministry of Public Health, Thailand

Updated Jan 23,2023



Population and Demographic Feature

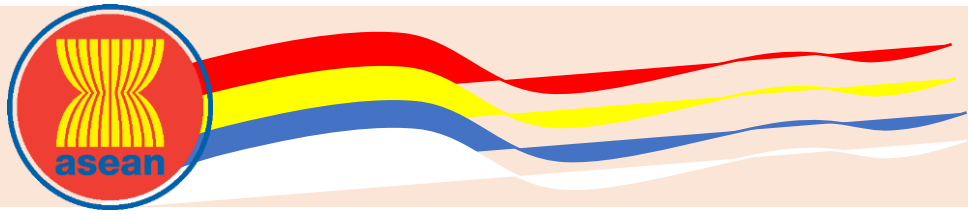
สัดส่วนของประชากร จำแนกตามกลุ่มอายุและเขต พ.ศ. 2559 และ พ.ศ. 2573



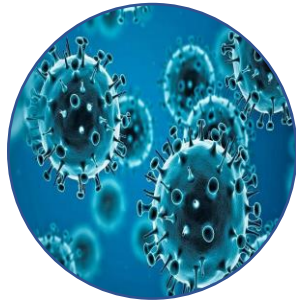
Population Information

Mostly Thai People lives in Country More than 64 million, 7 Million lives in Bangkok Metropolis

The population structure has changed into an aging society. The growth rate of the Thai population tends to decrease continuously. reduction of the childhood population and the increase of the elderly population



Health Profile 2022



COVID-19 in Thailand
Infected 4,689,897
Death 32,922
Recovery 4,642,894



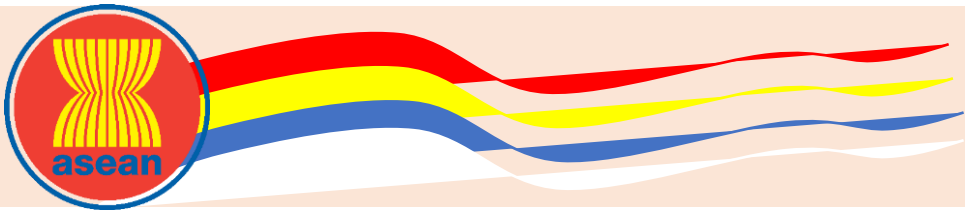
Mental Health
"Mental health" will be.
Major Waves to Watch
Out for this period



Road Traffic Injury
Road accident
noticeably drop
During the Covid-19

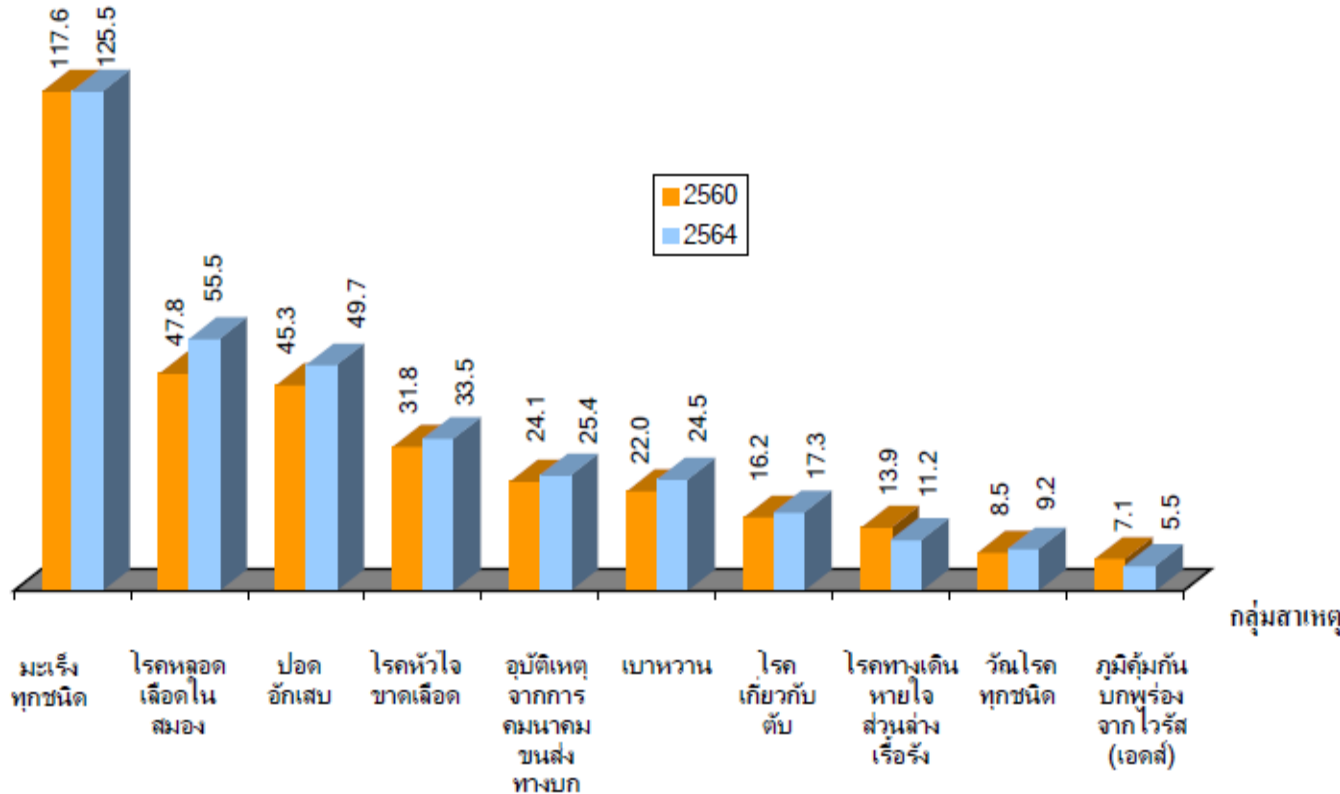


Health Behavior and
Chronic Diseases



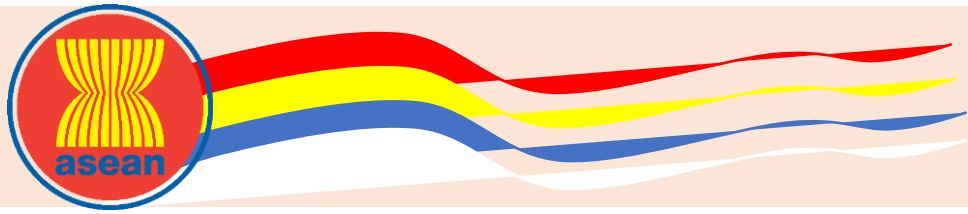
Health Profile 2022

Figure 2.3 A : Mortality Rates by Leading Cause of Death per 100,000 Population Thailand, 2017 and 2021

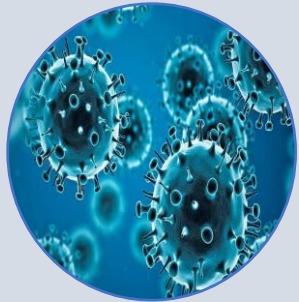


The First 10 groups of Diseases may cause death in Thailand

1. Malignant neoplasms, all forms
2. Diseases of the circulatory system
3. Diseases of the respiratory system
4. Certain infectious and parasitic Diseases
5. External cause of morbidity and mortality Other accidents, including late effect
6. Diseases of the nervous system
7. Diseases of the genitourinary system
8. Diseases of the digestive system
9. Endocrine, nutritional and metabolic diseases
10. Diseases of the blood and blood-forming organs and certain disorders involving the immune mechanism



Common Hazard in Thailand



Infected Disease



Flood



Drought



Road Traffic Injury



Chemical Explosion
and Fire, Blaze



PM 2.5